

14' LOA
 168 LOA - Inches

21 Max Beam

30-37 Estimated Weight:
 175 Design Displacement
 Solo Type
 ASY Symetry

14' x 21" 8 Plank Kayak

47.6 BH1 From Bow

93.1 BH 2 From Bow

126 BH 3 From Bow

4.94 Displacement Hull Speed
 10.5 D/L Limited Speed
 0.51 Prismatic Coefficient
 31 D/L Ratio
 2.85 S/L Ratio:
 2.7 Buttock Angle:
 8 # of Panels

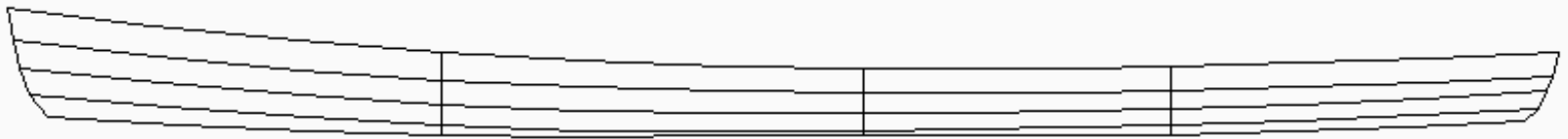
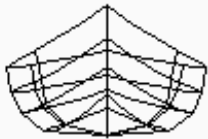


8SMYAK

13 Bow Height

7.8 Height Center

Stern Height 8



1.95 Bow Rocker

Stern Rocker 1.5

16.1 BH1 Width Sheer

21 BH2 Width Sheer

17 BH 3 Width Sheer

Design Displacement up to 175 lbs
 Smaller kayak for advanced paddlers, narrow beam, flared sides bow to stern

Lines for 22" Beam avail



91.4 Center of Buoyancy
 2.4 Center of Buoyancy
 86.5 Center of Lateral Area
 Center of Lateral Area
 3.32 Lateral Area (Ft. Sq)

20.5 WL Beam
 3.5 WL Height
 4.3 Freeboard

163 WL Length

173 WL Displacement:
 2.77 Displaced Vol
 21.254 Displaced Vol Cubed
 73 Lbs. Immersion per additional 1"

- Plank Lines on file
- Plank Lines Measured
- Plank Lines Checked/Verified

Number of Sheets

14' LOA
 168 LOA - Inches

23 Max Beam

30-35 Estimated Weight:
 175 Design Displacement
 Solo Type
 ASY Symetry

14' x 23" 4 Plank Hard Chine Kayak

43.5 BH1 From Bow

92.2 BH 2 From Bow

129 BH 3 From Bow

4.92 Displacement Hull Speed
 10.3 D/L Limited Speed
 0.51 Prismatic Coefficient
 32 D/L Ratio
 2.81 S/L Ratio:
 3.1 Buttock Angle:
 4 # of Panels

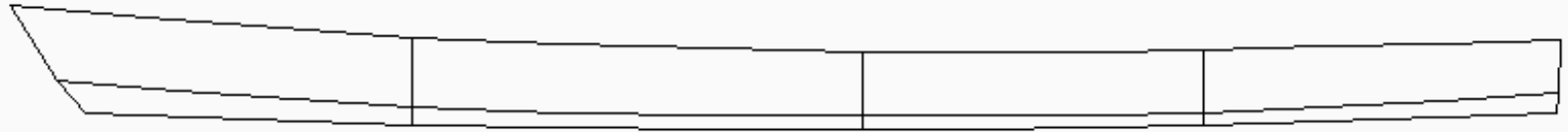
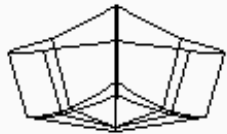


14X23K2

13.5 Bow Height

8.5 Height Center

Stern Height 9.8



1.75 Bow Rocker

Stern Rocker 1.75

13.78 BH1 Width Sheer

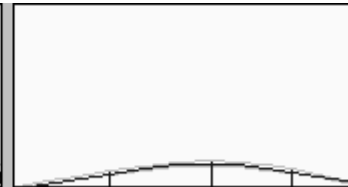
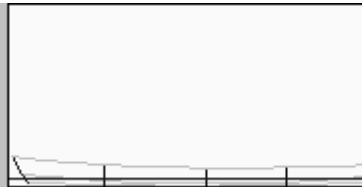
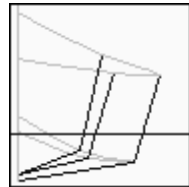
23 BH2 Width Sheer

15.78 BH 3 Width Sheer

Hard chine with mild flare, balanced rocker bow/stern
 For smaller paddlers up to 175 lbs.
 Compare to Chesapeake 14 & Arctic Tern 14

10.81 DL Limited speed @ 150 lbs PC.50
 The _____ is sized for the smaller paddler. It is a classic hard-chine kayak based on traditional West Greenland craft. It has a shallow "V" bottom and a symmetrical hull fore and aft. This is a stable and responsive kayak, suited to kids or small adults from about 50 to 125 pounds in

_____ Number of Sheets



20.36 WL Beam
 3.8 WL Height
 4.7 Freeboard

162 WL Length

175 WL Displacement:
 2.82 Displaced Vol
 22.426 Displaced Vol Cubed
 70 Lbs. Immersion per additional 1"

91.9 Center of Buoyancy
 2.5 Center of Buoyancy
 87.4 Center of Lateral Area
 2.2 Center of Lateral Area
 3.57 Lateral Area (Ft. Sq)

- Plank Lines on file
- Plank Lines Measured
- Plank Lines Checked/Verified



ESKIMO TOM

custom featherweight canoes & kayaks
eskimotom.com 612.961.8380

14' LOA
168 LOA - Inches

24 Max Beam

30-35 Estimated Weight:
250 Design Displacement
Solo Type
ASY Symetry

14' x 24" 8 Plank Kayak

47.6 BH1 From Bow

93.1 BH 2 From Bow

126 BH 3 From Bow

4.96 Displacement Hull Speed
9.43 D/L Limited Speed
0.53 Prismatic Coefficient
44 D/L Ratio
2.55 S/L Ratio:
2.7 Buttock Angle:
8 # of Panels

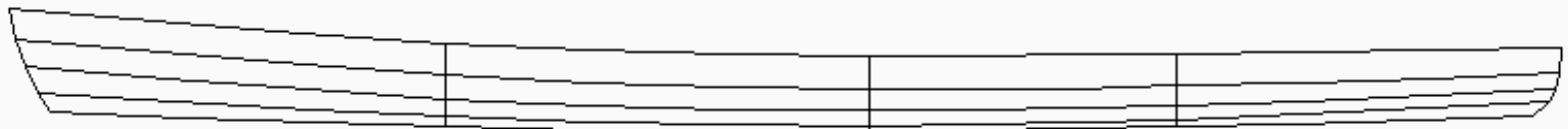


8SMYAKW

13 Bow Height

8 Height Center

Stern Height 8



2 Bow Rocker

Stern Rocker 1.5

16.1 BH1 Width Sheer

21 BH2 Width Sheer

17 BH 3 Width Sheer

Design Displacement up to 250 lbs
Smaller kayak for beginner, intermediate or
paddler needing added volume for tripping



91.3 Center of Buoyancy
2.7 Center of Buoyancy
86.3 Center of Lateral Area
2.4 Center of Lateral Area
4.24 Lateral Area (Ft. Sq)

23.38 WL Beam
4.3 WL Height
3.7 Freeboard

164 WL Length

253 WL Displacement:
4.06 Displaced Vol
66.923 Displaced Vol Cubed
87 Lbs. Immersion per additional 1"

- Plank Lines on file
- Plank Lines Measured
- Plank Lines Checked/Verified

Number of Sheets

15' 8" LOA
 188 LOA - Inches

23 Max Beam

35-42 Estimated Weight:
 Design Displacement
 Solo Type
 ASY Symetry

15' 8"x 23" 4 Plank Hard Chine Kayak

49 BH1 From Bow

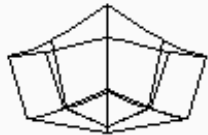
107 BH 2 From Bow

152 BH 3 From Bow

- 5.17 Displacement Hull Speed
- 11.5 D/L Limited Speed
- 0.48 Prismatic Coefficient
- 27 D/L Ratio
- 2.97 S/L Ratio:
- 3.4 Buttock Angle:
- 4 # of Panels



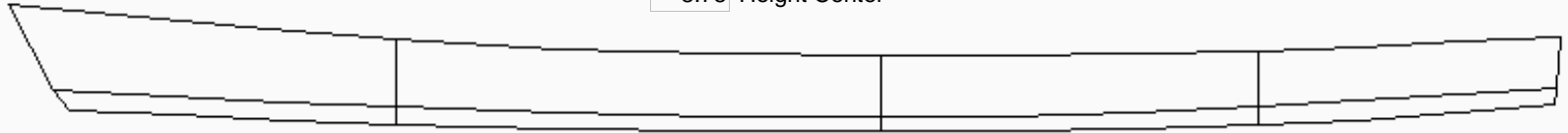
TOMMY



15.2 Bow Height

8.75 Height Center

Stern Height 11



2.5 Bow Rocker

Stern Rocker 2.5

12.92 BH1 Width Sheer

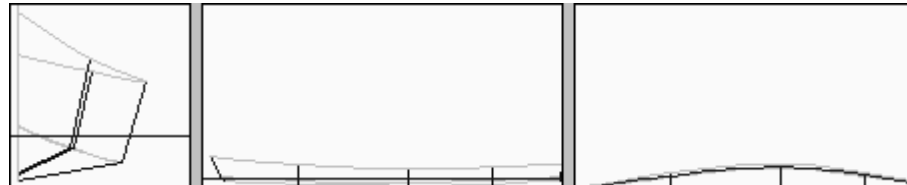
23 BH2 Width Sheer

13.34 BH 3 Width Sheer

Was supposed to have flatter bottom

Note: More stern rocker than bow Work?

11.87 D/L limited speed @ 175 Lbs PC .48



104.1 Center of Buoyancy
 2.7 Center of Buoyancy
 99.9 Center of Lateral Area
 2.4 Center of Lateral Area
 4.05 Lateral Area (Ft. Sq)

20.24 WL Beam
 4.1 WL Height
 4.65 Freeboard

178 WL Length

198 WL Displacement:
 3.16 Displaced Vol
 31.554 Displaced Vol Cubed
 75 Lbs. Immersion per additional 1"

- Plank Lines on file
- Plank Lines Measured
- Plank Lines Checked/Verified

3 Number of Sheets



ESKIMO TOM

custom featherweight canoes & kayaks
eskimotom.com 612.961.8380

15' 8" LOA
188 LOA - Inches

24 Max Beam

Estimated Weight:
175 Design Displacement
Solo Type
ASY Symetry

15' 8" x 24" 4 Plank SOT/ Paddleboard

47.5 BH1 From Bow

95 BH 2 From Bow

142 BH 3 From Bow

- 5.3 Displacement Hull Speed
- 12.8 D/L Limited Speed
- 0.47 Prismatic Coefficient
- 20 D/L Ratio
- 3.2 S/L Ratio:
- 2 Buttock Angle:
- 4 # of Panels

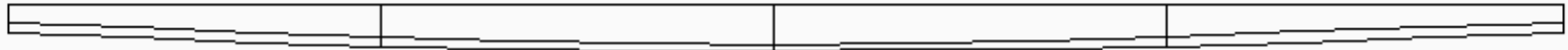


SOT3

5.5 Bow Height

5.5 Height Center

Stern Height 5.5



2.5 Bow Rocker

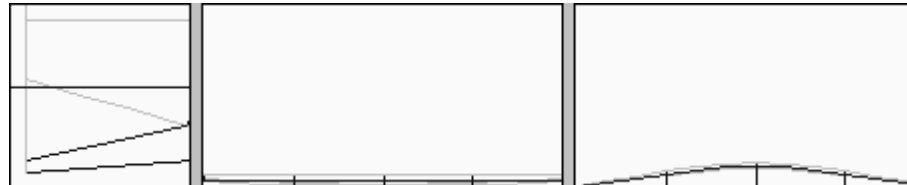
Stern Rocker 2.5

15.42 BH1 Width Sheer

24 BH2 Width Sheer

15.42 BH 3 Width Sheer

Flat Top, plumb bow/stern, flared sides
very shallow v bottom



94.9 Center of Buoyancy
2 Center of Buoyancy
94 Center of Lateral Area
1.8 Center of Lateral Area
3.03 Lateral Area (Ft. Sq)

21.3 WL Beam
3.1 WL Height
2.4 Freeboard

188 WL Length

175 WL Displacement:
2.8 Displaced Vol
21.952 Displaced Vol Cubed
87 Lbs. Immersion per additional 1"

- Plank Lines on file
- Plank Lines Measured
- Plank Lines Checked/Verified

Number of Sheets



ESKIMO TOM

custom featherweight canoes & kayaks
eskimotom.com 612.961.8380

15' 8" LOA
188 LOA - Inches

24 Max Beam

Estimated Weight:
175 Design Displacement
Solo Type
SYM Symetry

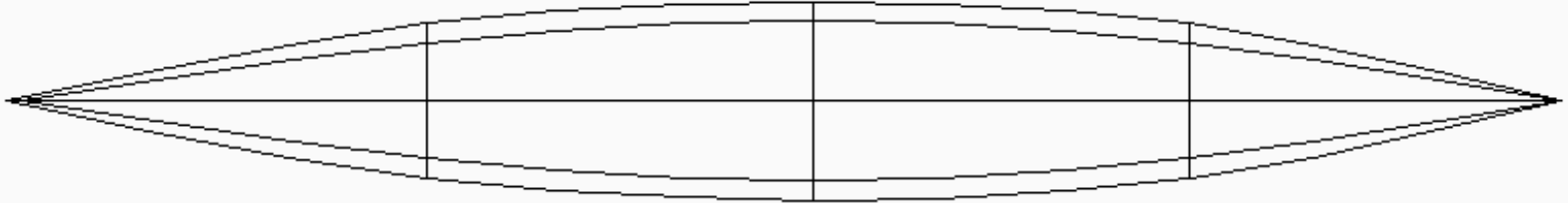
15' 8" x 24" 4 Plank SOT Paddleboard

53.6 BH1 From Bow

100 BH 2 From Bow

146 BH 3 From Bow

- 5.26 Displacement Hull Speed
- 12.4 D/L Limited Speed
- 0.52 Prismatic Coefficient
- 22 D/L Ratio
- 3.17 S/L Ratio:
- 2.6 Buttock Angle:
- 4 # of Panels

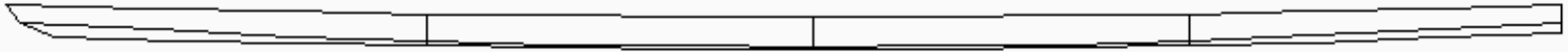
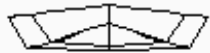


SOT

5.75 Bow Height

5 Height Center

Stern Height 5.8



1.5 Bow Rocker

Stern Rocker 1.5

18.6 BH1 Width Sheer

23.82 BH2 Width Sheer

18.6 BH 3 Width Sheer

rocker slight v bottom Symetrical
Highly flared sides Deck follows curve fore-aft
but is otherwise flat
Double ended



- 97 Center of Buoyancy
- 1.9 Center of Buoyancy
- 97.6 Center of Lateral Area
- 1.6 Center of Lateral Area
- 2.71 Lateral Area (Ft. Sq)

- 21.66 WL Beam
- 2.7 WL Height
- 2.3 Freeboard

185 WL Length

- 178 WL Displacement:
- 2.86 Displaced Vol
- 23.394 Displaced Vol Cubed
- 93 Lbs. Immersion per additional 1"

- Plank Lines on file
- Plank Lines Measured
- Plank Lines Checked/Verified

Number of Sheets



ESKIMO TOM

custom featherweight canoes & kayaks
eskimotom.com 612.961.8380

15' 9" LOA
189 LOA - Inches

22 Max Beam

Estimated Weight:
290 Design Displacement
Solo Type
ASY Symetry

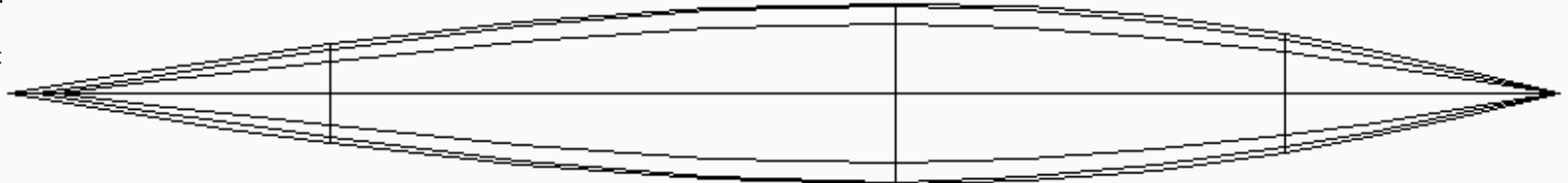
15' 9" x 22" 6 Plank Kayak

39.4 BH1 From Bow

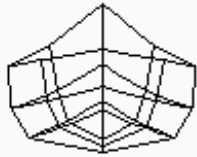
109 BH 2 From Bow

156 BH 3 From Bow

5.22 Displacement Hull Speed
10.5 D/L Limited Speed
0.53 Prismatic Coefficient
37 D/L Ratio
2.69 S/L Ratio:
3.6 Buttock Angle:
6 # of Panels



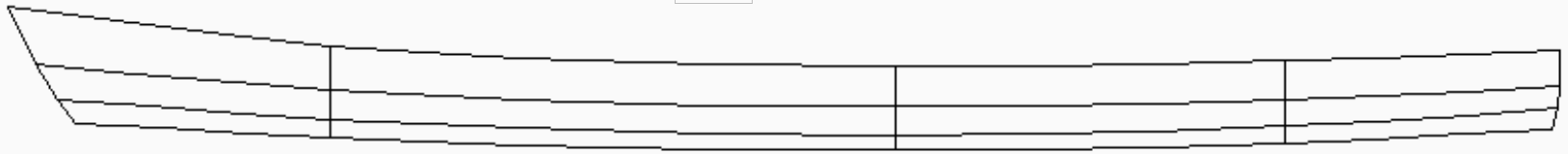
SEAKAYAK



17 Bow Height

10.25 Height Center

Stern Height 12



3.29 Bow Rocker

Stern Rocker 2.55

12.2 BH1 Width Sheer

21.92 BH2 Width Sheer

14.5 BH 3 Width Sheer

15' 10" x 22" 6 Panel Kayak
High volume



107.5 Center of Buoyancy
3.5 Center of Buoyancy
100.7 Center of Lateral Area
3.1 Center of Lateral Area
5.41 Lateral Area (Ft. Sq)

21.56 WL Beam
5.3 WL Height
4.95 Freeboard

182 WL Length

287 WL Displacement:
4.61 Displaced Vol
97.972 Displaced Vol Cubed
87 Lbs. Immersion per additional 1"

- Plank Lines on file
- Plank Lines Measured
- Plank Lines Checked/Verified

Number of Sheets



ESKIMO TOM

custom featherweight canoes & kayaks
eskimotom.com 612.961.8380

15'9" LOA
189 LOA - Inches

22 Max Beam

Estimated Weight:
200 Design Displacement
Solo Type
ASY Symetry

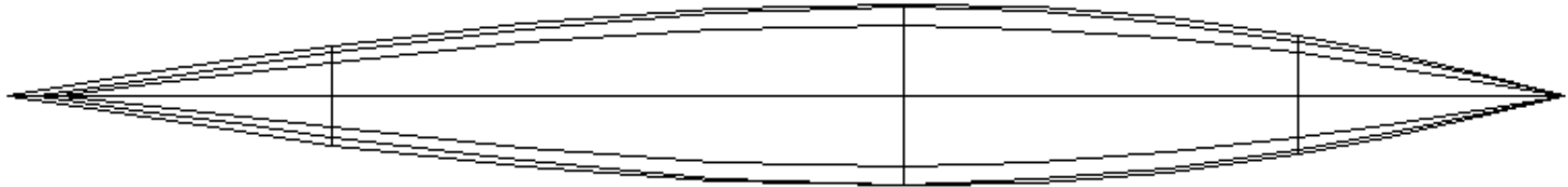
15' 9" x 22" 6 Plan Low Volume Kayak

39.4 BH1 From Bow

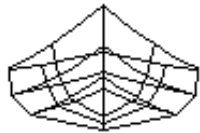
109 BH 2 From Bow

157 BH 3 From Bow

- 5.2 Displacement Hull Speed
- 11.6 D/L Limited Speed
- 0.5 Prismatic Coefficient
- 26 D/L Ratio
- 2.99 S/L Ratio:
- 3.7 Buttock Angle:
- 6 # of Panels



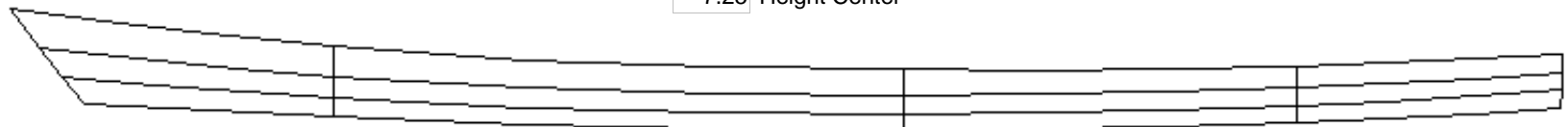
SEALOW



14.6 Bow Height

7.25 Height Center

Stern Height 8.6



3 Bow Rocker

Stern Rocker 2.5

12 BH1 Width Sheer

22 BH2 Width Sheer

14.46 BH 3 Width Sheer

V bottom, Flared sides

Low volume, if you don't plan on camping you don't need the volume and the additional weight needed to create that volume.



- 109 Center of Buoyancy
- 2.8 Center of Buoyancy
- 102 Center of Lateral Area
- 2.5 Center of Lateral Area
- 4.05 Lateral Area (Ft. Sq)

- 21.5 WL Beam
- 4.2 WL Height
- 3.05 Freeboard

181 WL Length

- 202 WL Displacement:
- 3.25 Displaced Vol
- 34.328 Displaced Vol Cubed
- 86 Lbs. Immersion per additional 1"

- Plank Lines on file
- Plank Lines Measured
- Plank Lines Checked/Verified

Number of Sheets

15' 9" LOA
 189 LOA - Inches

22 Max Beam

Estimated Weight:
 225 Design Displacement
 Solo Type
 ASY Symetry

15' 10" x 22" 8 Plank Kayak

55.7 BH1 From Bow

113 BH 2 From Bow

15177 BH 3 From Bow

5.24 Displacement Hull Speed
 11.4 D/L Limited Speed
 0.5 Prismatic Coefficient
 28 D/L Ratio
 2.92 S/L Ratio:
 3.6 Buttock Angle:
 8 # of Panels

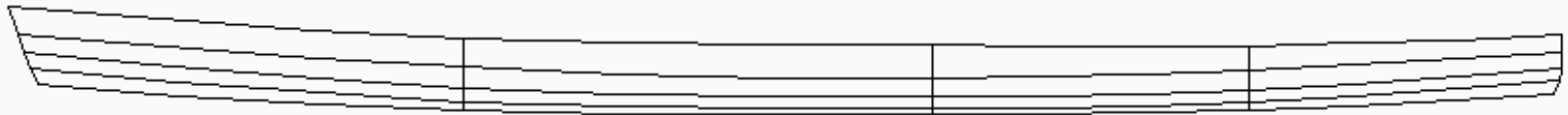
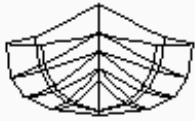


15_6X22

14 Bow Height

8.35 Height Center

Stern Height 9.6



2.8 Bow Rocker

Stern Rocker 2.5

15.34 BH1 Width Sheer

22 BH2 Width Sheer

15.42 BH 3 Width Sheer

West River type

Reduced waterline beam



109.3 Center of Buoyancy
 2.7 Center of Buoyancy
 100.1 Center of Lateral Area
 2.4 Center of Lateral Area
 4.53 Lateral Area (Ft. Sq)

20.78 WL Beam
 4.3 WL Height
 4.05 Freeboard

183 WL Length

225 WL Displacement:
 3.63 Displaced Vol
 47.832 Displaced Vol Cubed
 82 Lbs. Immersion per additional 1"

- Plank Lines on file
- Plank Lines Measured
- Plank Lines Checked/Verified

Number of Sheets

15' 9" LOA
 189 LOA - Inches

23 Max Beam

35-42 Estimated Weight:
 300 Design Displacement
 Solo Type
 ASY Symetry

15' 10" x 23 8 Plank Kayak

55.9 BH1 From Bow

113 BH 2 From Bow

153 BH 3 From Bow

- 5.17 Displacement Hull Speed
- 10.1 D/L Limited Speed
- 0.55 Prismatic Coefficient
- 40 D/L Ratio
- 2.62 S/L Ratio:
- 2.8 Buttock Angle:
- 8 # of Panels

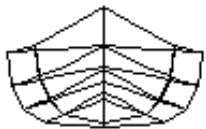


Kayak8

14 Bow Height

8.75 Height Center

Stern Height 9.5



1.5 Bow Rocker

Stern Rocker 1.41

16.44 BH1 Width Sheer

23 BH2 Width Sheer

16.38 BH 3 Width Sheer

Multichine comparable to West River type



104.6 Center of Buoyancy
 2.8 Center of Buoyancy
 101.2 Center of Lateral Area
 2.6 Center of Lateral Area
 5.17 Lateral Area (Ft. Sq)

21.88 WL Beam
 4.7 WL Height
 4.05 Freeboard

178 WL Length

301 WL Displacement:
 4.76 Displaced Vol
 107.850 Displaced Vol Cubed
 87 Lbs. Immersion per additional 1"

- Plank Lines on file
- Plank Lines Measured
- Plank Lines Checked/Verified

Number of Sheets



ESKIMO TOM

custom featherweight canoes & kayaks
eskimotom.com 612.961.8380

15' 10" LOA
189 LOA - Inches

24 Max Beam

Estimated Weight:
175 Design Displacement
Solo Type
SYM Symetry

15' 10" x 24" 4 Plank SOT Paddleboard

53.4 BH1 From Bow

99.8 BH 2 From Bow

142 BH 3 From Bow

- 5.32 Displacement Hull Speed
- 12.9 D/L Limited Speed
- 0.5 Prismatic Coefficient
- 20 D/L Ratio
- 3.25 S/L Ratio:
- 2.6 Buttock Angle:
- 4 # of Panels

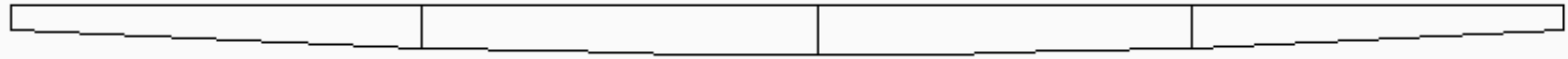


SOT2

5 Bow Height

5.42 Height Center

Stern Height 5



1.98 Bow Rocker

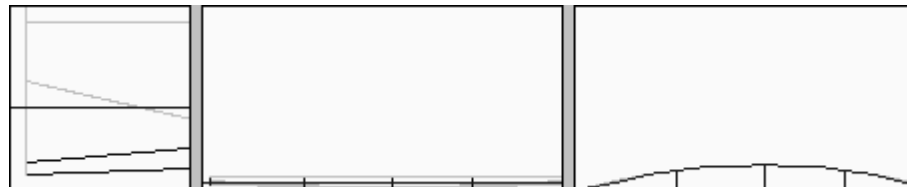
Stern Rocker 1.98

18.66 BH1 Width Sheer

24 BH2 Width Sheer

18.66 BH 3 Width Sheer

Vertical sides, flat deck, plumb bow/stern
Very shallow V rockered bottom
Mostly symmetrical



98.1 Center of Buoyancy
1.6 Center of Buoyancy
95.6 Center of Lateral Area
1.5 Center of Lateral Area
1.5 Lateral Area (Ft. Sq)

23.9 WL Beam
2.4 WL Height
3.02 Freeboard

189 WL Length

176 WL Displacement:
2.82 Displaced Vol
22.426 Displaced Vol Cubed
107 Lbs. Immersion per additional 1"

- Plank Lines on file
- Plank Lines Measured
- Plank Lines Checked/Verified

Number of Sheets



ESKIMO TOM

custom featherweight canoes & kayaks
eskimotom.com 612.961.8380

15' 9" LOA
189 LOA - Inches

25 Max Beam

Estimated Weight:
200 Design Displacement
Solo Type
ASY Symetry

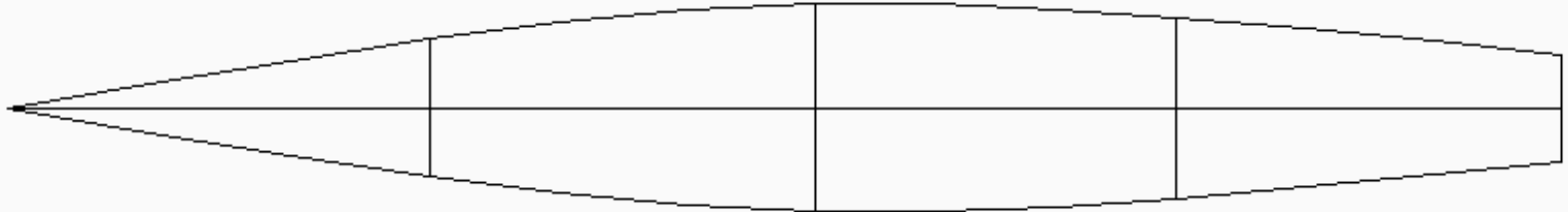
15' 9" x 25" 4 Panel Sit on Top/Paddleboard

53.4 BH1 From Bow

99.8 BH 2 From Bow

143 BH 3 From Bow

- 5.29 Displacement Hull Speed
- 12.2 D/L Limited Speed
- 0.51 Prismatic Coefficient
- 23 D/L Ratio
- 3.1 S/L Ratio:
- 2.4 Buttock Angle:
- 4 # of Panels

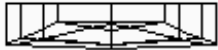


SOT5

5.5 Bow Height

5.5 Height Center

Stern Height 5.5



2 Bow Rocker

Stern Rocker 2

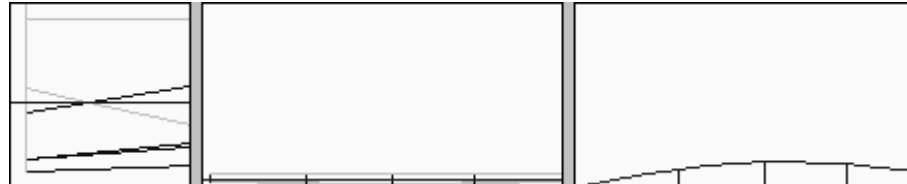
16.5 BH1 Width Sheer

25 BH2 Width Sheer

21.64 BH 3 Width Sheer

Very Shallow V bottom
Slightly rockered bottom
Like wind surfer, paddle board, flat deck
Small transom stern, plumb bow, stern & sides

Inspired by the Dynamite sailboard and sailing
paddle boards of Popular Mechanics



- 103.1 Center of Buoyancy
- 1.8 Center of Buoyancy
- 96.8 Center of Lateral Area
- 1.6 Center of Lateral Area
- 2.32 Lateral Area (Ft. Sq)

- 25 WL Beam
- 2.6 WL Height
- 2.9 Freeboard

187 WL Length

- 209 WL Displacement:
- 3.17 Displaced Vol
- 31.855 Displaced Vol Cubed
- 117 Lbs. Immersion per additional 1"

- Plank Lines on file
- Plank Lines Measured
- Plank Lines Checked/Verified

Number of Sheets

15' 10" LOA
 190 LOA - Inches

21 Max Beam

36-42 Estimated Weight:
 175 Design Displacement
 Solo Type
 ASY Symetry

15' 10" x 21" 8 Plank Narrow Kayak

55.9 BH1 From Bow

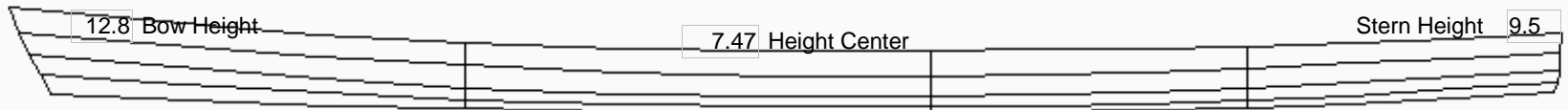
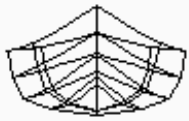
113 BH 2 From Bow

152 BH 3 From Bow

5.27 Displacement Hull Speed
 12.5 D/L Limited Speed
 0.5 Prismatic Coefficient
 21 D/L Ratio
 3.19 S/L Ratio:
 3.4 Buttock Angle:
 8 # of Panels



KYAK82



2.03 Bow Rocker

Stern Rocker 2.28

15.02 BH1 Width Sheer

20.86 BH2 Width Sheer

12.78 BH 3 Width Sheer

Looks Like a dupe



105.6 Center of Buoyancy
 2.4 Center of Buoyancy
 97.8 Center of Lateral Area
 97.8 Center of Lateral Area
 2 Lateral Area (Ft. Sq)

19.12 WL Beam
 3.6 WL Height
 3.87 Freeboard

185 WL Length

174 WL Displacement:
 2.81 Displaced Vol
 22.188 Displaced Vol Cubed
 76 Lbs. Immersion per additional 1"

- Plank Lines on file
- Plank Lines Measured
- Plank Lines Checked/Verified

Number of Sheets

15' 10" LOA
 190 LOA - Inches

21 Max Beam

36-42 Estimated Weight:
 200 Design Displacement
 Solo Type
 ASY Symetry

15' 10" x 21" 8 Plank Kayak

55.1 BH1 From Bow

116 BH 2 From Bow

152 BH 3 From Bow

5.29 Displacement Hull Speed
 12.2 D/L Limited Speed
 0.46 Prismatic Coefficient
 24 D/L Ratio
 3.07 S/L Ratio:
 3.5 Buttock Angle:
 8 # of Panels

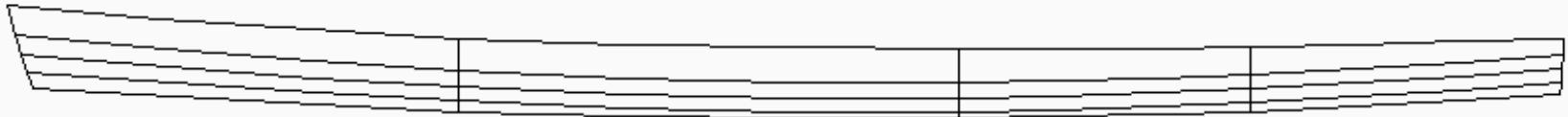


15_6x22C

13.6 Bow Height

8.33 Height Center

Stern Height 9.6



3.63 Bow Rocker

Stern Rocker 2.74

13.78 BH1 Width Sheer

21 BH2 Width Sheer

13.6 BH 3 Width Sheer

Built this one. Intended to be fast light touring
 Plumb stern, lower rocker in stern to facilitate
 tracking. Bow rocker high, a bit tender and bow
 rocker is above waterline when lightly loaded

Multichine for intermediate or better paddlers
 Plenty rocker, flared sides for secondary stability

11.89 D/L Limited Speed @ 217 Lbs PC.47



110 Center of Buoyancy
 2.6 Center of Buoyancy
 101.4 Center of Lateral Area
 2.4 Center of Lateral Area
 4 Lateral Area (Ft. Sq)

19.82 WL Beam
 4.1 WL Height
 4.23 Freeboard

187 WL Length

204 WL Displacement:
 3.25 Displaced Vol
 34.328 Displaced Vol Cubed
 77 Lbs. Immersion per additional 1"

- Plank Lines on file
- Plank Lines Measured
- Plank Lines Checked/Verified

Number of Sheets

15' 10" LOA
 190 LOA - Inches

21 Max Beam

36-42 Estimated Weight:
 205 Design Displacement
 Solo Type
 ASY Symetry

15' 10" x 21" 8 Plank Kayak

55.1 BH1 From Bow

116 BH 2 From Bow

152 BH 3 From Bow

5.29 Displacement Hull Speed
 12.1 D/L Limited Speed
 0.47 Prismatic Coefficient
 24 D/L Ratio
 3.06 S/L Ratio:
 3.5 Buttock Angle:
 8 # of Panels

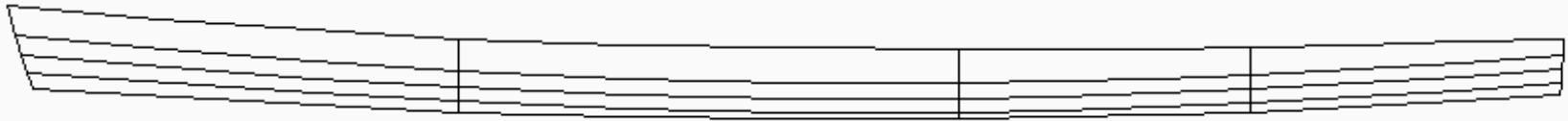


16_2x21R

13.6 Bow Height

8.3 Height Center

Stern Height 9.6



3.63 Bow Rocker

Stern Rocker 3

13.78 BH1 Width Sheer

21 BH2 Width Sheer

13.6 BH 3 Width Sheer

Low volume, narrow beam, multichine
 Mild flare on sides

12.69 D/L Limited Speed @ 175 PC .46



109.5 Center of Buoyancy
 2.6 Center of Buoyancy
 101.6 Center of Lateral Area
 2.3 Center of Lateral Area
 4 Lateral Area (Ft. Sq)

19.82 WL Beam
 4 WL Height
 4.3 Freeboard

187 WL Length

206 WL Displacement:
 3.3 Displaced Vol
 35.937 Displaced Vol Cubed
 77 Lbs. Immersion per additional 1"

- Plank Lines on file
- Plank Lines Measured
- Plank Lines Checked/Verified

Number of Sheets



ESKIMO TOM

custom featherweight canoes & kayaks
eskimotom.com 612.961.8380

15' 10" LOA
190 LOA - Inches

23 Max Beam

37-42 Estimated Weight:
230 Design Displacement
Solo Type
SYM Symetry

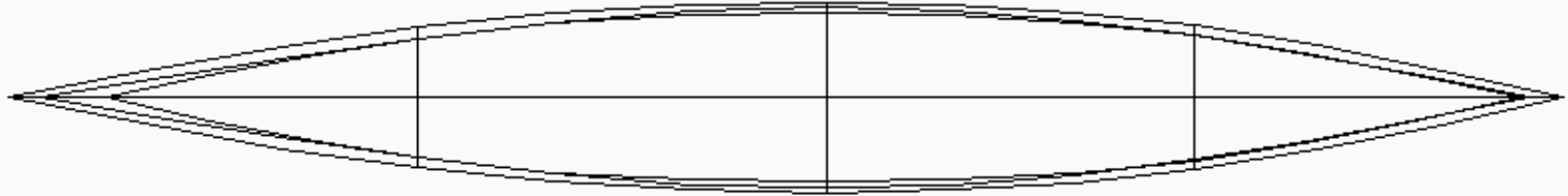
15' 10" x 23" Greenland Style

BH1 From Bow

BH 2 From Bow

BH 3 From Bow

5.01 Displacement Hull Speed
9.98 D/L Limited Speed
0.56 Prismatic Coefficient
38 D/L Ratio
2.67 S/L Ratio:
3.6 Buttock Angle:
0 # of Panels

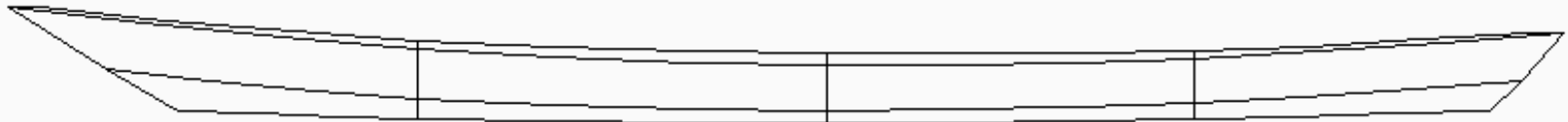
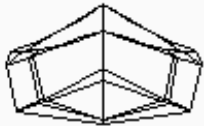


001

14 Bow Height

8.5 Height Center

Stern Height 11



1.5 Bow Rocker

Stern Rocker 1.5

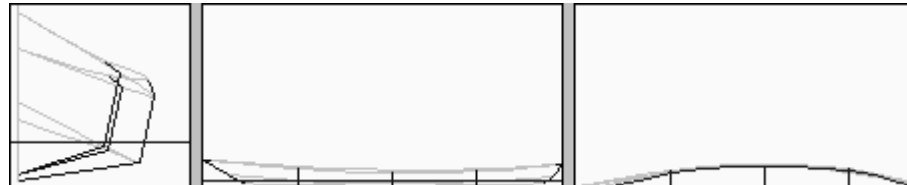
17.04 BH1 Width Sheer

23 BH2 Width Sheer

15.5 BH3 Width Sheer

shorter waterline length, Greenland style lines
Arctic Tern/Queen Charlotte

9.98 D/L Limited Speed @ 229 Lbs PC .56



100.7 Center of Buoyancy
2.6 Center of Buoyancy
100 Center of Lateral Area
2.2 Center of Lateral Area
3.96 Lateral Area (Ft. Sq)

21.62 WL Beam
4 WL Height
4.5 Freeboard

167 WL Length

229 WL Displacement:
3.68 Displaced Vol
49.836 Displaced Vol Cubed
87 Lbs. Immersion per additional 1"

- Plank Lines on file
- Plank Lines Measured
- Plank Lines Checked/Verified

Number of Sheets



ESKIMO TOM

custom featherweight canoes & kayaks
eskimotom.com 612.961.8380

15' 10" LOA
190 LOA - Inches

23 Max Beam

36 Estimated Weight:
200 Design Displacement
Solo Type
ASY Symetry

15' 8" x 22" 4 Plank Hard Chine Kayak

39.1 BH1 From Bow

104 BH 2 From Bow

153 BH 3 From Bow

- 5.25 Displacement Hull Speed
- 11.9 D/L Limited Speed
- 0.52 Prismatic Coefficient
- 25 D/L Ratio
- 3.03 S/L Ratio:
- 2.6 Buttock Angle:
- 4 # of Panels

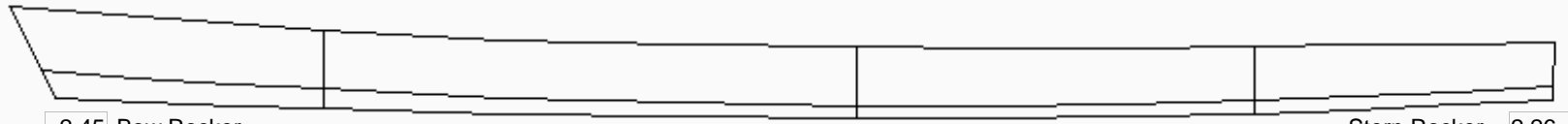
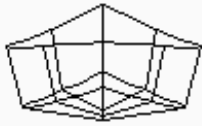


2CHKAYAK

13.7 Bow Height

8.4 Height Center

Stern Height 9.2



2.45 Bow Rocker

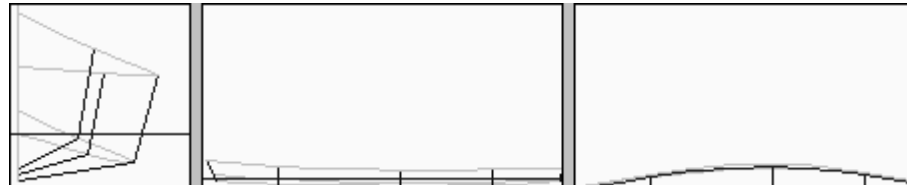
Stern Rocker 2.26

12.46 BH1 Width Sheer

23 BH2 Width Sheer

BH 3 Width Sheer

Dimensions similar to CLC Chesapeake with lower deck height



107 Center of Buoyancy
2.5 Center of Buoyancy
10.4 Center of Lateral Area
2.2 Center of Lateral Area
3.88 Lateral Area (Ft. Sq)

20.3 WL Beam
3.8 WL Height
4.6 Freeboard

184 WL Length

204 WL Displacement:
3.27 Displaced Vol
34.966 Displaced Vol Cubed
84 Lbs. Immersion per additional 1"

- Plank Lines on file
- Plank Lines Measured
- Plank Lines Checked/Verified

Number of Sheets



ESKIMO TOM

custom featherweight canoes & kayaks
eskimotom.com 612.961.8380

15' 10" LOA
190 LOA - Inches

24 Max Beam

Estimated Weight:
175 Design Displacement
Solo Type
ASY Symetry

15' 10" x 24" Sit on Top Paddleboard

53.4 BH1 From Bow

101 BH 2 From Bow

146 BH 3 From Bow

- 5.16 Displacement Hull Speed
- 11.9 D/L Limited Speed
- 0.51 Prismatic Coefficient
- 24 D/L Ratio
- 3.09 S/L Ratio:
- 0 Buttock Angle:
- 3 # of Panels



SOT4

6 Bow Height

6 Height Center

Stern Height 6



3 Bow Rocker

Stern Rocker 3

17.06 BH1 Width Sheer

24 BH2 Width Sheer

17.06 BH 3 Width Sheer

Flared Sides
One piece curved bottom ala Bolger Instant hulls, Plum Bow & Stern



99.7 Center of Buoyancy
1.8 Center of Buoyancy
97.7 Center of Lateral Area
1.6 Center of Lateral Area
2.15 Lateral Area (Ft. Sq)

20.74 WL Beam
2.7 WL Height
3.3 Freeboard

178 WL Length

172 WL Displacement:
3.17 Displaced Vol
31.855 Displaced Vol Cubed
90 Lbs. Immersion per additional 1"

- Plank Lines on file
- Plank Lines Measured
- Plank Lines Checked/Verified

Number of Sheets



ESKIMO TOM

custom featherweight canoes & kayaks
eskimotom.com 612.961.8380

15' 10" LOA
190 LOA - Inches

24 Max Beam

Estimated Weight:
275 Design Displacement
Solo Type
ASY Symetry

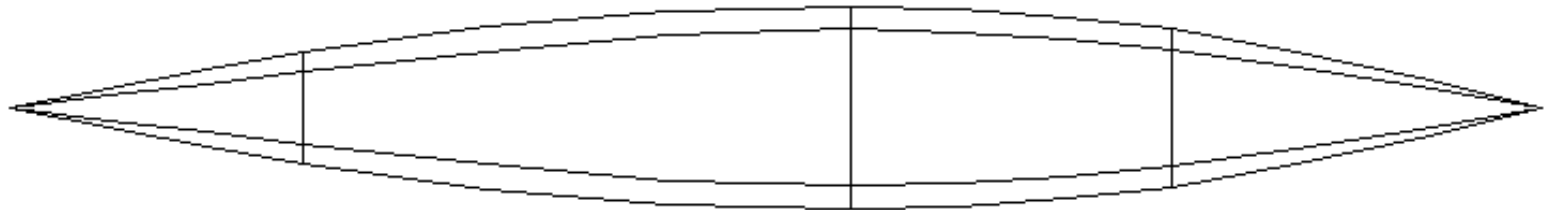
15' 10" x 24" 4 Plank Kayak

40 BH1 From Bow

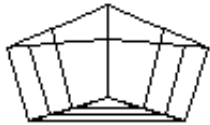
102 BH 2 From Bow

138.14 BH 3 From Bow

- 5.23 Displacement Hull Speed
- 10.7 D/L Limited Speed
- 0.52 Prismatic Coefficient
- 35 D/L Ratio
- 2.73 S/L Ratio:
- 1.5 Buttock Angle:
- 7 # of Panels



TKL



14 Bow Height

9 Height Center

Stern Height 10



2 Bow Rocker

Stern Rocker 2

12.5 BH1 Width Sheer

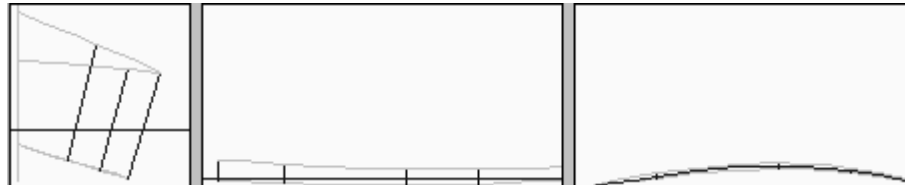
24 BH2 Width Sheer

17.84 BH 3 Width Sheer

The least number of panels needed to build a performance kayak or narrow flat water canoe. One piece rockered bottom, one piece flared sides

"The Sharpie Kayak"

D/L Limited Speed @175 Lbs PCf.



107.7 Center of Buoyancy
2.5 Center of Buoyancy
100.8 Center of Lateral Area
27 Center of Lateral Area
3.82 Lateral Area (Ft. Sq)

21.26 WL Beam
4.3 WL Height
4.7 Freeboard

183 WL Length

279 WL Displacement:
4.47 Displaced Vol
89.315 Displaced Vol Cubed
87 Lbs. Immersion per additional 1"

- Plank Lines on file
- Plank Lines Measured
- Plank Lines Checked/Verified

Number of Sheets



ESKIMO TOM

custom featherweight canoes & kayaks
eskimotom.com 612.961.8380

15' 10" LOA
190 LOA - Inches

29 Max Beam

Estimated Weight:
230 Design Displacement
Solo Type
ASY Symetry

15' 10" x 25" Sit on Top Kayak

24.1 BH1 From Bow

48.2 BH 2 From Bow

75 BH 3 From Bow

5.26 Displacement Hull Speed

11.5 D/L Limited Speed

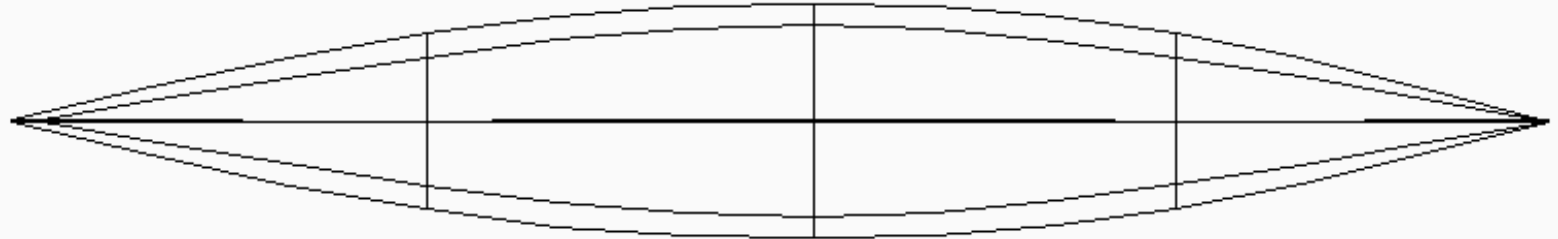
0.52 Prismatic Coefficient

28 D/L Ratio

2.92 S/L Ratio:

2.6 Buttock Angle:

4 # of Panels

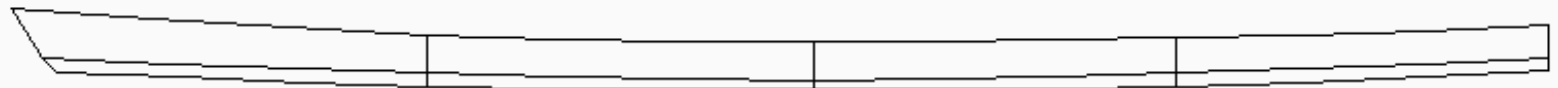
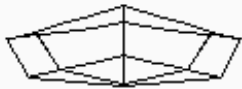


SOTROKR

10 Bow Height

5.96 Height Center

Stern Height 8



2.25 Bow Rocker

Stern Rocker 2.25

16 BH1 Width Sheer

24 BH2 Width Sheer

22 BH 3 Width Sheer

Shallow V with rocker Looks conventional from side just real low Heavily flared sides

Note: stern rocker more than bow
BH1 & BH3 Aligned Looks symmetrical

1 " over two panels



99 Center of Buoyancy
2 Center of Buoyancy
98.2 Center of Lateral Area
1.6 Center of Lateral Area
3.3 Lateral Area (Ft. Sq)

26.16 WL Beam
3.3 WL Height
2.66 Freeboard

184 WL Length

232 WL Displacement:
3.72 Displaced Vol
51.479 Displaced Vol Cubed
105 Lbs. Immersion per additional 1"

- Plank Lines on file
- Plank Lines Measured
- Plank Lines Checked/Verified

Number of Sheets

16' 2" LOA
 194 LOA - Inches

24 Max Beam

Estimated Weight:
 250 Design Displacement
 Solo Type
 ASY Symetry

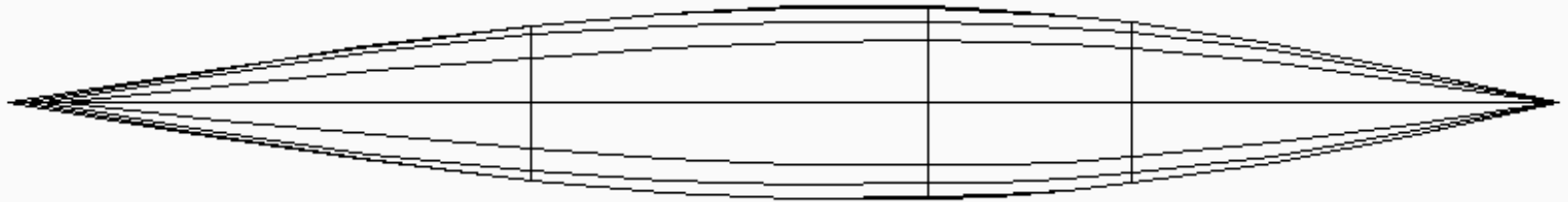
16' 2" x 24" 8 Plank Kayak

65.3 BH1 From Bow

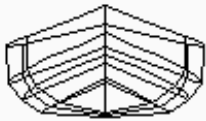
115 BH 2 From Bow

141 BH 3 From Bow

5.27 Displacement Hull Speed
 11.2 D/L Limited Speed
 0.5 Prismatic Coefficient
 31 D/L Ratio
 2.85 S/L Ratio:
 3.4 Buttock Angle:
 8 # of Panels



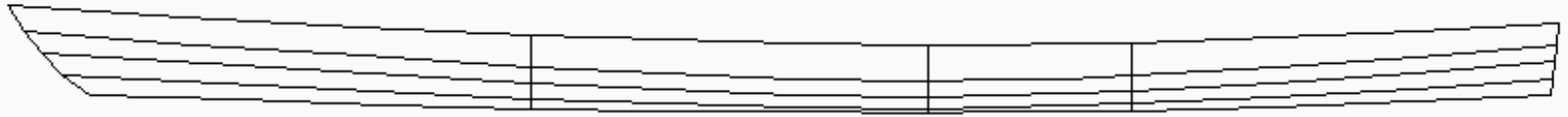
15Kayak



13.3 Bow Height

8.4 Height Center

Stern Height 11



2.23 Bow Rocker

Stern Rocker 2.19

19.24 BH1 Width Sheer

24 BH2 Width Sheer

20.02 BH 3 Width Sheer

High Volume
 CLC West River Work Up

12.50 D/L Limited Speed @ 175 Lbs PC .47
 WL3.2
 12.10 D/L Limited Speed @ 200 Lbs PC .48
 WL3.5



111.2 Center of Buoyancy
 2.6 Center of Buoyancy
 102.7 Center of Lateral Area
 2.4 Center of Lateral Area
 4.24 Lateral Area (Ft. Sq)

23.52 WL Beam
 4.1 WL Height
 4.3 Freeboard

186 WL Length

250 WL Displacement:
 4.08 Displaced Vol
 67.917 Displaced Vol Cubed
 97 Lbs. Immersion per additional 1"

- Plank Lines on file
- Plank Lines Measured
- Plank Lines Checked/Verified

Number of Sheets



ESKIMO TOM

custom featherweight canoes & kayaks
eskimotom.com 612.961.8380

17' LOA
199 LOA - Inches

24 Max Beam

200 Estimated Weight:
200 Design Displacement
Solo Type
ASY Symetry

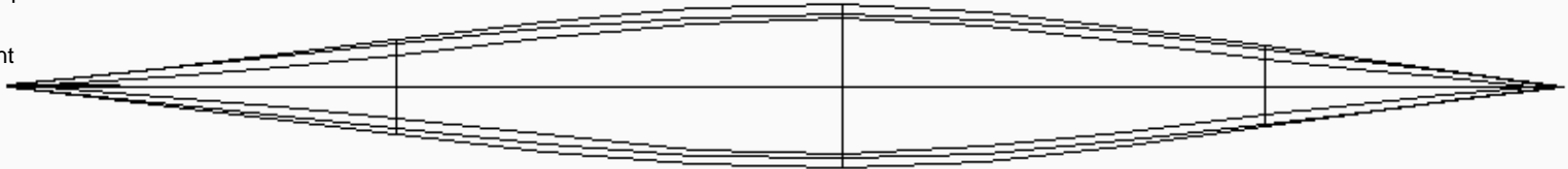
16' 7" x 21" 4 Plank Kayak

50.6 BH1 From Bow

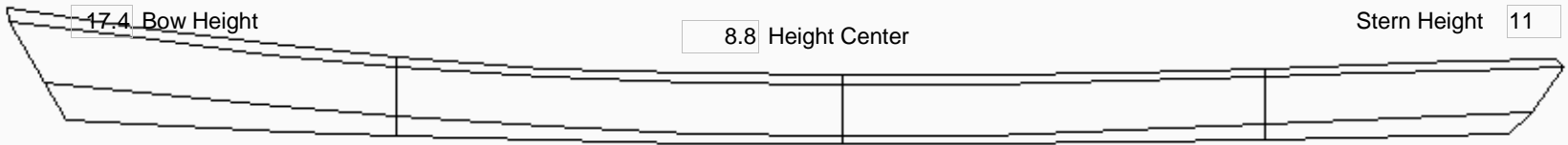
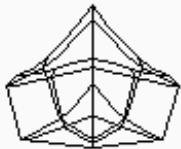
108 BH 2 From Bow

162 BH 3 From Bow

- 5.31 Displacement Hull Speed
- 12.3 D/L Limited Speed
- 0.44 Prismatic Coefficient
- 23 D/L Ratio
- 3.1 S/L Ratio:
- 2.4 Buttock Angle:
- 4 # of Panels



MCANN2



2.98 Bow Rocker

Stern Rocker 1.29

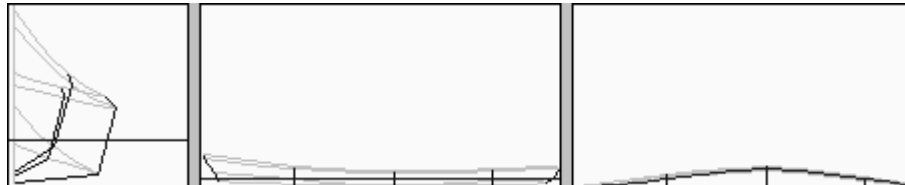
10.9 BH1 Width Sheer

18.46 BH2 Width Sheer

9.64 BH3 Width Sheer

Primarily 4 panel with "beveled deck" Pygmy Coho style

Designer unknown



- 109.4 Center of Buoyancy
- 206 Center of Buoyancy
- 107.3 Center of Lateral Area
- 2.1 Center of Lateral Area
- 4.43 Lateral Area (Ft. Sq)

- 19.22 WL Beam
- 4.2 WL Height
- 4.6 Freeboard

189 WL Length

- 202 WL Displacement:
- 3.24 Displaced Vol
- 34.012 Displaced Vol Cubed
- 70 Lbs. Immersion per additional 1"

- Plank Lines on file
- Plank Lines Measured
- Plank Lines Checked/Verified

Number of Sheets



ESKIMO TOM

custom featherweight canoes & kayaks
eskimotom.com 612.961.8380

17' LOA
204 LOA - Inches

22 Max Beam

Estimated Weight:
225 Design Displacement
Solo Type
ASY Symetry

17' x 22" 6 Plank Kayak

46.3 BH1 From Bow

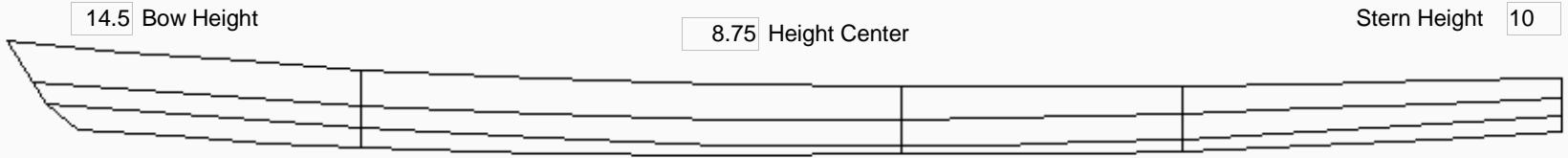
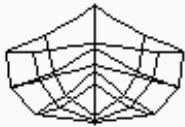
117 BH 2 From Bow

154 BH 3 From Bow

- 5.4 Displacement Hull Speed
- 12.5 D/L Limited Speed
- 0.46 Prismatic Coefficient
- 23 D/L Ratio
- 3.1 S/L Ratio:
- 3.5 Buttock Angle:
- 6 # of Panels



ESKIMOTO



14.5 Bow Height

8.75 Height Center

Stern Height 10

3.25 Bow Rocker

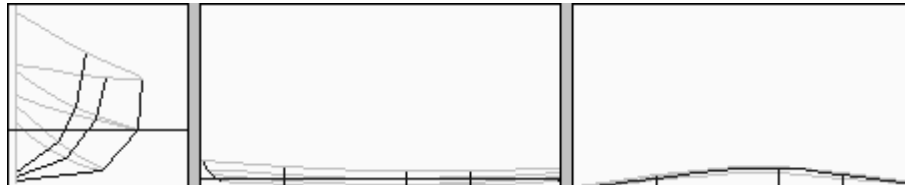
Stern Rocker 2.75

12.22 BH1 Width Sheer

22 BH2 Width Sheer

15.7 BH 3 Width Sheer

17 x 22" 6 Panel Kayak



- 112.8 Center of Buoyancy
- 2.8 Center of Buoyancy
- 106.5 Center of Lateral Area
- 2.5 Center of Lateral Area
- 4.83 Lateral Area (Ft. Sq)

- 21.1 WL Beam
- 4.4 WL Height
- 4.35 Freeboard

196 WL Length

- 227 WL Displacement:
- 3.64 Displaced Vol
- 48.229 Displaced Vol Cubed
- 83 Lbs. Immersion per additional 1"

- Plank Lines on file
- Plank Lines Measured
- Plank Lines Checked/Verified

Number of Sheets



ESKIMO TOM

custom featherweight canoes & kayaks
eskimotom.com 612.961.8380

17' LOA
204 LOA - Inches

23 Max Beam

Estimated Weight:
275 Design Displacement
Solo Type
ASY Symetry

17' x 23" 6 Plank Kayak

60.6 BH1 From Bow

119 BH 2 From Bow

160 BH 3 From Bow

5.32 Displacement Hull Speed

11.3 D/L Limited Speed

0.5 Prismatic Coefficient

31 D/L Ratio

2.84 S/L Ratio:

3.1 Buttock Angle:

6 # of Panels

ET2

17.3 Bow Height

9 Height Center

Stern Height 10

3 Bow Rocker

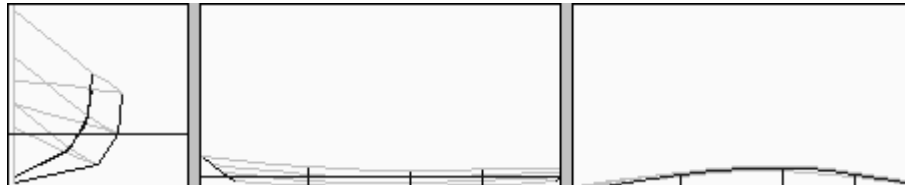
Stern Rocker 3

16 BH1 Width Sheer

23 BH2 Width Sheer

16 BH 3 Width Sheer

Standard 23" Beam
Innovative in that it has 6 panels



114.3 Center of Buoyancy
3.4 Center of Buoyancy
109.9 Center of Lateral Area
2.8 Center of Lateral Area
5.33 Lateral Area (Ft. Sq)

21 WL Beam
5 WL Height
4 Freeboard

189 WL Length

277 WL Displacement:
4.44 Displaced Vol
87.528 Displaced Vol Cubed
91 Lbs. Immersion per additional 1"

- Plank Lines on file
- Plank Lines Measured
- Plank Lines Checked/Verified

Number of Sheets



ESKIMO TOM

custom featherweight canoes & kayaks
eskimotom.com 612.961.8380

17' LOA
204 LOA - Inches

23.5 Max Beam

Estimated Weight:
300 Design Displacement
Solo Type
ASY Symetry

17' x 23.5" 8 Plank Kayak

59.6 BH1 From Bow

122 BH 2 From Bow

163 BH 3 From Bow

- 5.47 Displacement Hull Speed
- 12.6 D/L Limited Speed
- 0.5 Prismatic Coefficient
- 24 D/L Ratio
- 3.07 S/L Ratio:
- 3.9 Buttock Angle:
- 8 # of Panels



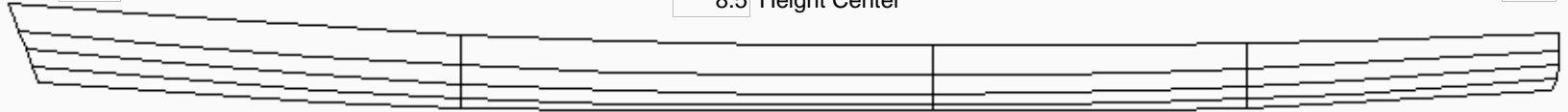
17_6X22



14 Bow Height

8.5 Height Center

Stern Height 10



3.5 Bow Rocker

Stern Rocker 2.5

16.66 BH1 Width Sheer

23.5 BH2 Width Sheer

14.5 BH3 Width Sheer

17' x 23.5" 8 Panel Kayak

13.45 D/L Limited speed @ 200 lbs PC .48

119.9 Center of Buoyancy
2.7 Center of Buoyancy
108.4 Center of Lateral Area
2.4 Center of Lateral Area
4.7 Lateral Area (Ft. Sq)

21.82 WL Beam
4.2 WL Height
4.3 Freeboard

200 WL Length

300 WL Displacement:
4 Displaced Vol
64.000 Displaced Vol Cubed
93 Lbs. Immersion per additional 1"

- Plank Lines on file
- Plank Lines Measured
- Plank Lines Checked/Verified

Number of Sheets

17 LOA
 204 LOA - Inches

24 Max Beam

37-42 Estimated Weight:
 250 Design Displacement
 Solo Type
 ASY Symetry

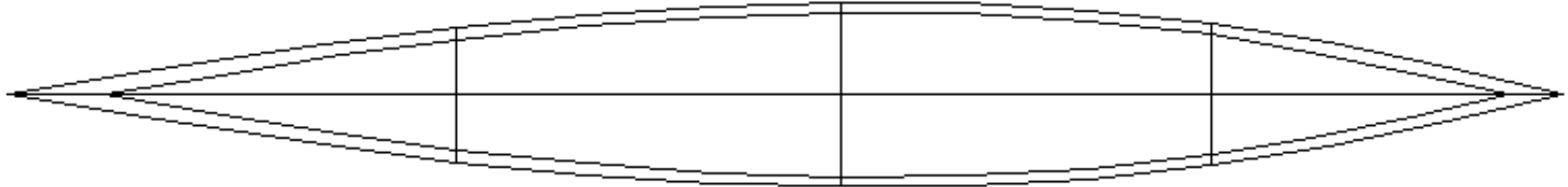
17' x 24" Kayak

BH1 From Bow

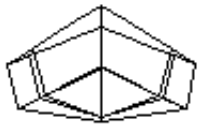
BH 2 From Bow

BH 3 From Bow

5.14 Displacement Hull Speed
 10.5 D/L Limited Speed
 0.53 Prismatic Coefficient
 35 D/L Ratio
 2.74 S/L Ratio:
 5.4 Buttock Angle:
 4 # of Panels



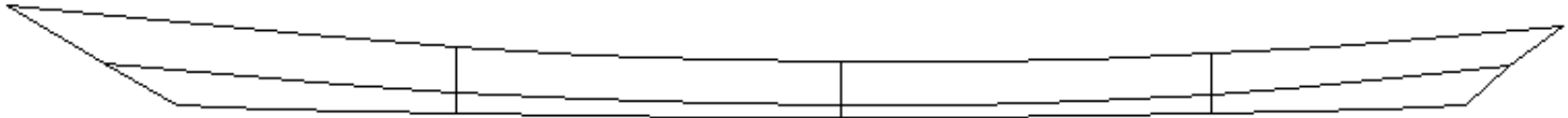
SITONTOP



14.8 Bow Height

8.5 Height Center

Stern Height 12



1.61 Bow Rocker

Stern Rocker 1.61

17.6 BH1 Width Sheer

24 BH2 Width Sheer

18.58 BH3 Width Sheer

by Tracy Thorleifson

steep rake of bow/stern profile reduces WL length significantly.

Could be built as beamy kayak



110.9 Center of Buoyancy
 2.7 Center of Buoyancy
 106.7 Center of Lateral Area
 2.4 Center of Lateral Area
 4.36 Lateral Area (Ft. Sq)

22.6 WL Beam
 4.2 WL Height
 4.3 Freeboard

176 WL Length

248 WL Displacement:
 3.98 Displaced Vol
 63.045 Displaced Vol Cubed
 92 Lbs. Immersion per additional 1"

Plank Lines on file
 Plank Lines Measured
 Plank Lines Checked/Verified

Number of Sheets

17' 6" LOA
 204 LOA - Inches

24 Max Beam

36-46 Estimated Weight:
 335 Design Displacement
 Solo Type
 ASY Symetry

17' 6" x 24" 8 Plank Kayak

52.0 BH1 From Bow

122 BH 2 From Bow

163 BH 3 From Bow

5.43 Displacement Hull Speed
 11.3 D/L Limited Speed
 0.52 Prismatic Coefficient
 33 D/L Ratio
 2.79 S/L Ratio:
 3.5 Buttock Angle:
 8 # of Panels

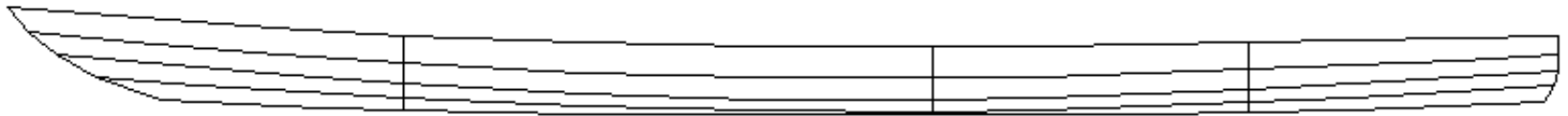
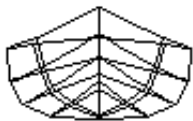


17_6x22B

14.4 Bow Height

9.1 Height Center

Stern Height 11



1.8 Bow Rocker

Stern Rocker 1.5

16.4 BH1 Width Sheer

24 BH2 Width Sheer

17.22 BH 3 Width Sheer

High Volume Multi Chine Kayak Asymmetrical or Swede form hull

Stern design facilitates simplified addition of a rudder should it be desired.

Compare:
 Pygmy Osprey HP



119.5 Center of Buoyancy
 2.9 Center of Buoyancy
 113.6 Center of Lateral Area
 2.6 Center of Lateral Area
 5.87 Lateral Area (Ft. Sq)

22.54 WL Beam
 4.8 WL Height
 4.3 Freeboard

197 WL Length

337 WL Displacement:
 5.41 Displaced Vol
 158.340 Displaced Vol Cubed
 101 Lbs. Immersion per additional 1"

- Plank Lines on file
- Plank Lines Measured
- Plank Lines Checked/Verified

Number of Sheets



ESKIMO TOM

custom featherweight canoes & kayaks
eskimotom.com 612.961.8380

18' LOA
216 LOA - Inches

22 Max Beam

Estimated Weight:
300 Design Displacement
Solo Type
ASY Symetry

18' x 22" 8 Plank Kayak

55.7 BH1 From Bow

109 BH 2 From Bow

152 BH 3 From Bow

5.47 Displacement Hull Speed
12.7 D/L Limited Speed
0.51 Prismatic Coefficient
25 D/L Ratio
3.03 S/L Ratio:
2.7 Buttock Angle:
8 # of Panels

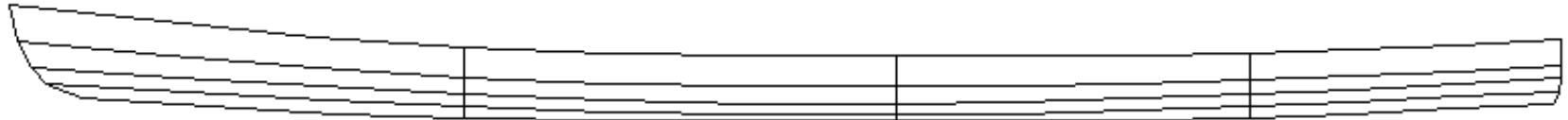
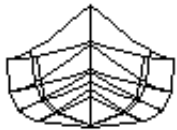


15_6x22B

161 Bow Height

8.75 Height Center

Stern Height 11



2.85 Bow Rocker

Stern Rocker 2.25

15.6BH1 Width Sheer

22 BH2 Width Sheer

18.5 BH 3 Width Sheer

Multichine



118.7 Center of Buoyancy
2.8 Center of Buoyancy
114.7 Center of Lateral Area
2.5 Center of Lateral Area
5.6 Lateral Area (Ft. Sq)

21.1 WL Beam
4.5 WL Height
4.25 Freeboard

210 WL Length

299 WL Displacement:
4.8 Displaced Vol
110.592 Displaced Vol Cubed
95 Lbs. Immersion per additional 1"

- Plank Lines on file
- Plank Lines Measured
- Plank Lines Checked/Verified

Number of Sheets